

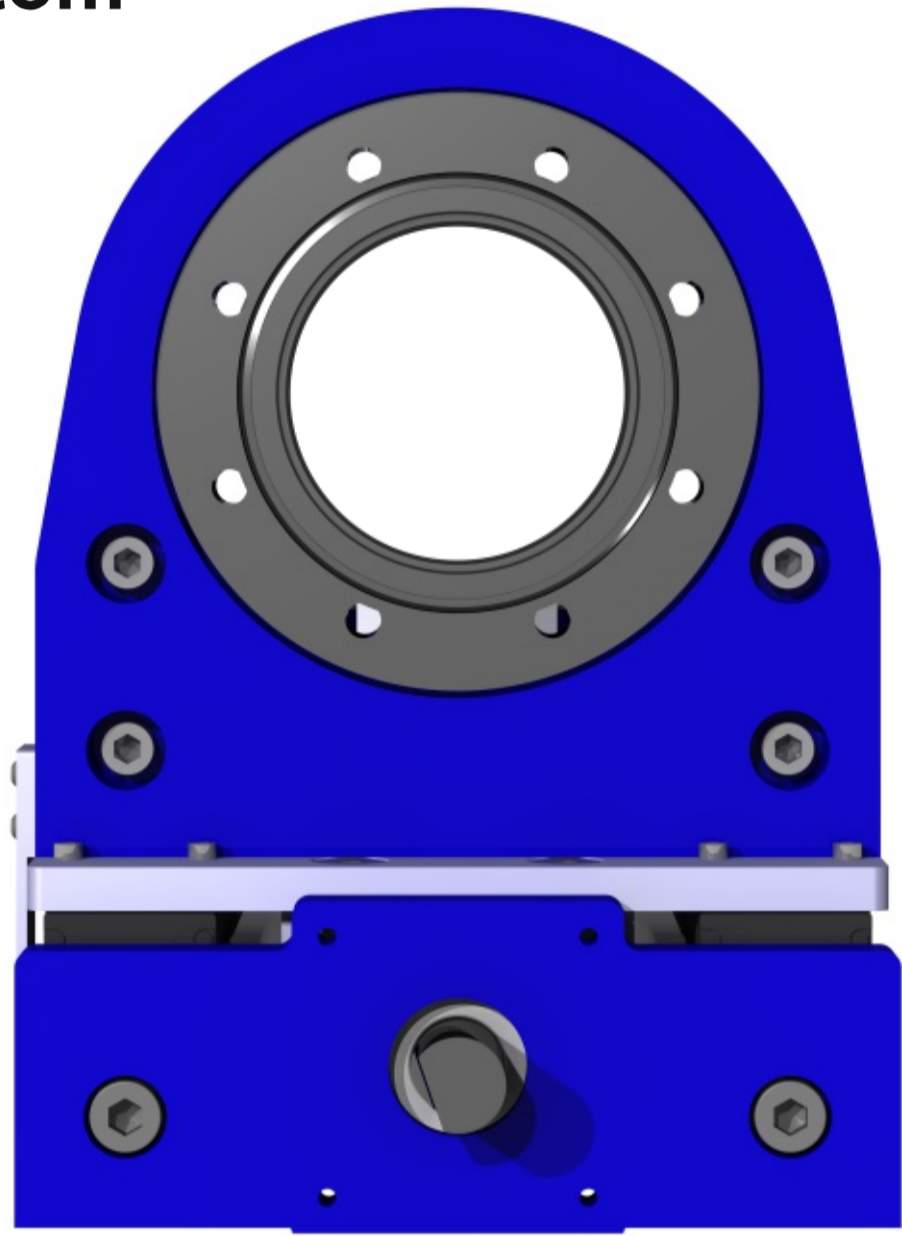
RD16 :: Rotary Feedthrough DN16CF

**CRHEFJRST400UHV ::
Model ST-400 UHV, LHe or LN₂ continuous
flow cryostat system with sample in vacuum**

**MR63DPV552 ::
Differentially Pumped Rotary Feedthrough**

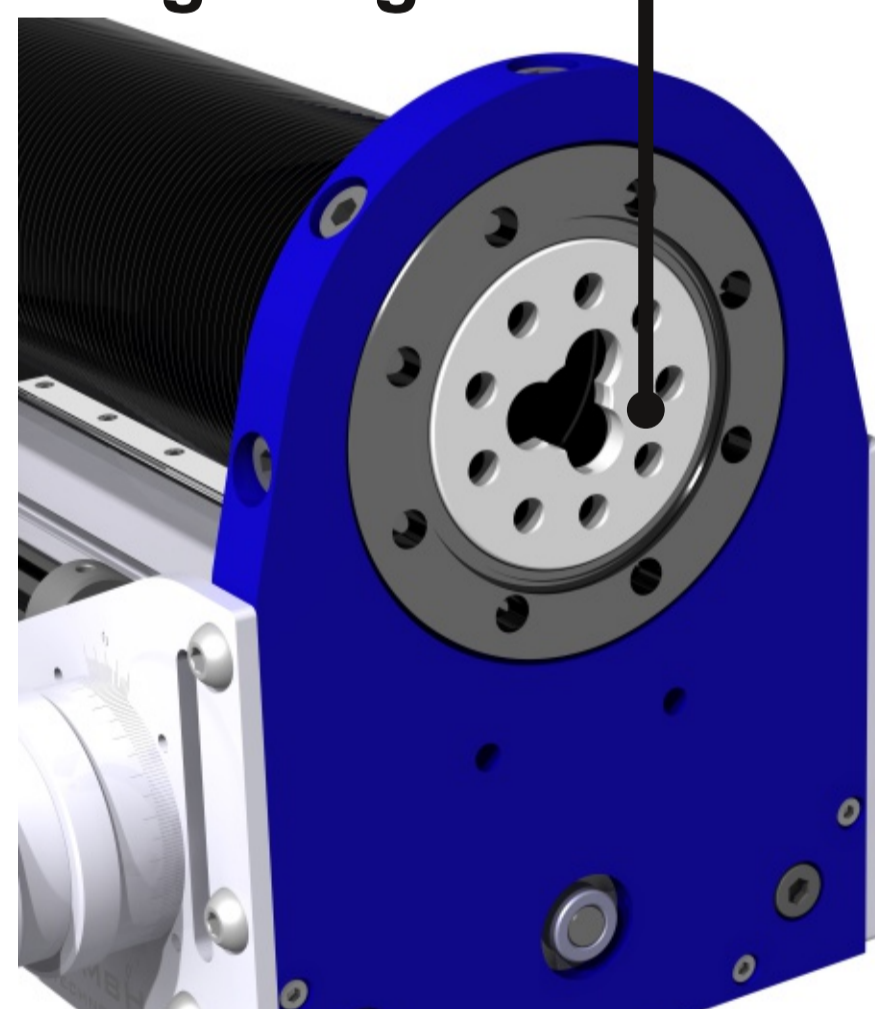
Free Bore

As the supports of the bellows are mounted externally, the bellows has a continuous free bore from top to bottom



Slide Bearing for Guidance

To hold and guide the mounted cryostat especially during linear adjustment, a slide bearing sits inside the mounting flange.



MZ Motorized Linear Z-Drive

Sizes and Options

- Flange Sizes: DN40CF, DN63CF, DN100CF
- Standard Linear Travel Lengths:
100, 200, 300, 400, 500, 750, 1000, 1250mm
- Adjustable Position/Limit Switch
- Linear Encoder
- Tapped or Through Holes for Either or Both Flanges

MXV Boomerax XY Stage

**Example of sample environment with rotateable
and tiltable sample stage with receiver for
SHOME C13 sample plates with electrical
contacts**

