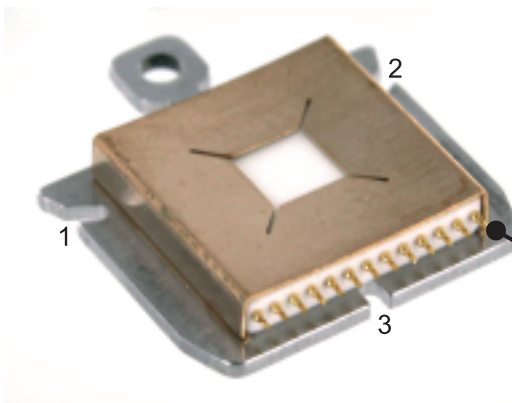


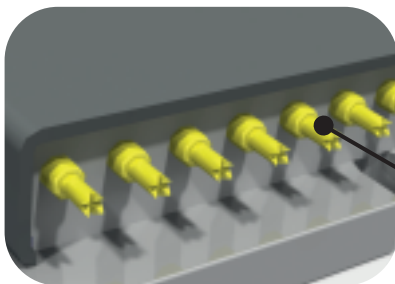
## SHOME C :: SAMPLE HOLDER WITH ELECTRICAL CONTACTS

The SHOME C is a standard sized sample holder with a maximum of 13 electrical contacts and is compatible with standard sample transfer systems for flag style holders.



### Reproducible positioning thanks to kinematic snap in

With its three slits, the SHOME C offers the great advantage of reproducible kinematic snap in, when placed into the corresponding and required RECOME C receiver. Reproducibility of snap-in is in the micrometer range. Commonly used flag plates don't offer reproducible positioning, which can often pose a problem for the user.



### Up to 13 electrical high quality spring contacts

Various devices can be wired up to the SHOME C, which features up to thirteen high quality spring contacts that are mounted into an AlN-isolator. The shape and size of the window in the top plate and shield cover can be customized to suit your requirements.

### Optional installation of temperature sensor

A pocket in the ceramic base allows for the installation of a DT-670 silicon diode temperature sensor or a PT100 resistor.

#### Materials:

Base plate and shield cap available in:

- Molybdenum
- Copper-Beryllium (CuBe<sub>2</sub>)
- Stainless steel 1.4301

Ceramic isolator base plate and sample mounting plate:

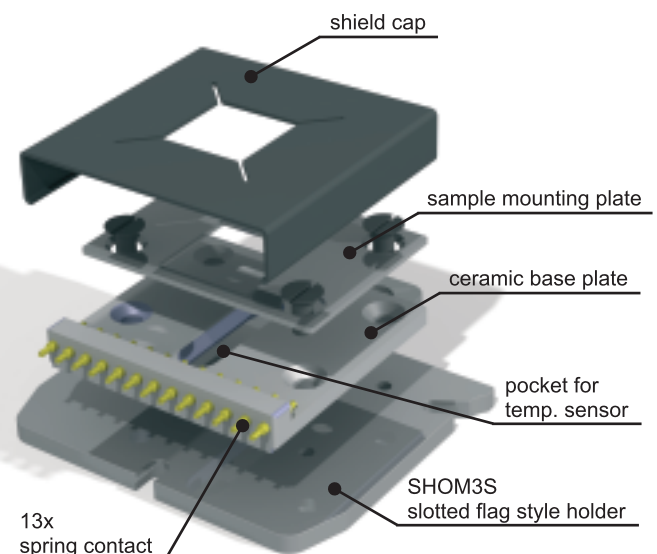
- Shapal M - machinable aluminium nitride ceramics

### Standard shield cap window sizes:

Square 3x3mm, 4x4mm, 4.5x4.5mm, 5x5mm, 6x6mm

### Temperature range:

4 to 500 K



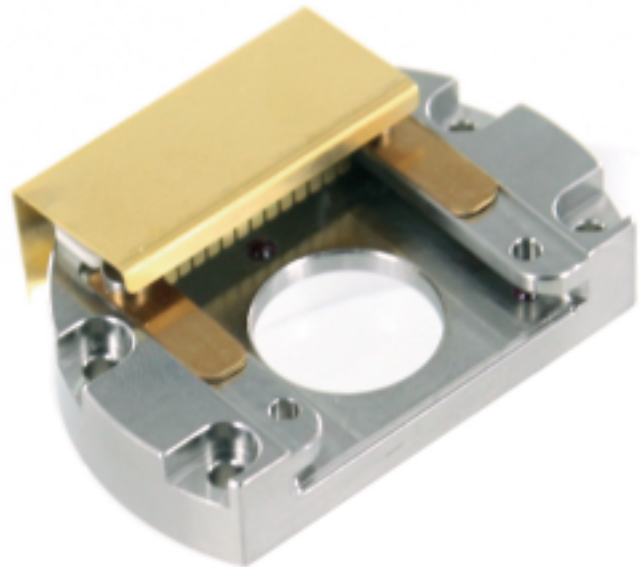
## RECOMEC :: RECEIVER WITH ELECTRICAL CONTACTS

With a maximum of 13 electrical contacts and kinematic snap-in lock, RECOMEC is the matching receiver for SHOMECS sample holders.

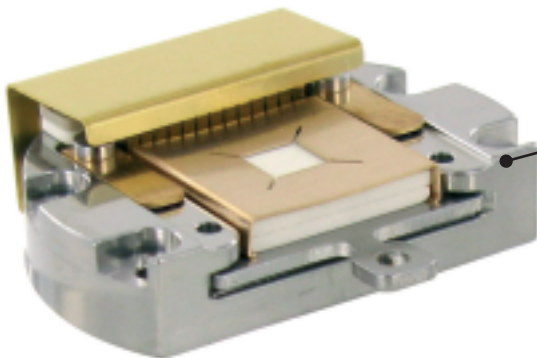
Slotted SHOMECS sample holders will snap into position reproducibly on three ruby spheres. Positioning is reproducible in the micrometer range. Two spring loaded rubies press from the top.

The present design can be adapted with customized shapes and mounting options to make the receiver fit your existing or planned sample environment.

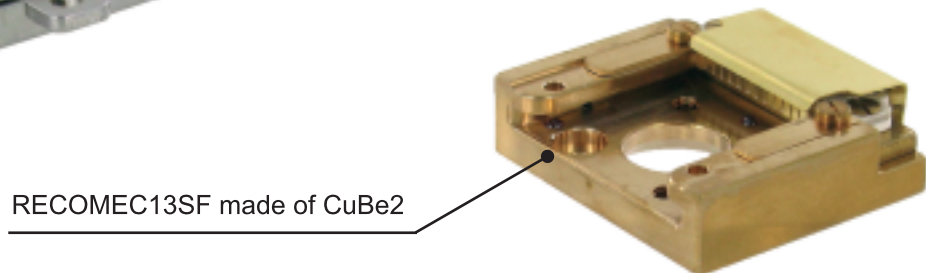
Please do not hesitate to contact us for further information: [sales@ferrovac.com](mailto:sales@ferrovac.com)



### A selection of examples ::

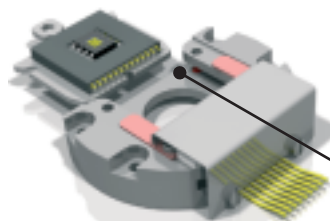


RECOMEC13 and locked in SHOMECS  
with maximum amount of 13 contacts



RECOMEC13SF made of CuBe2

"You name it,  
we build it!"



RECOMEC13 and SHOMECS with  
SOIC-08 surface mount socket